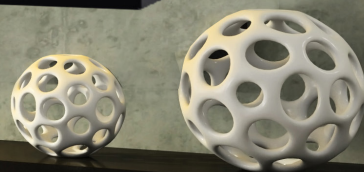
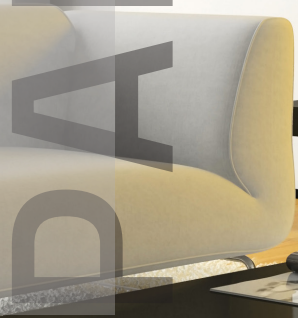


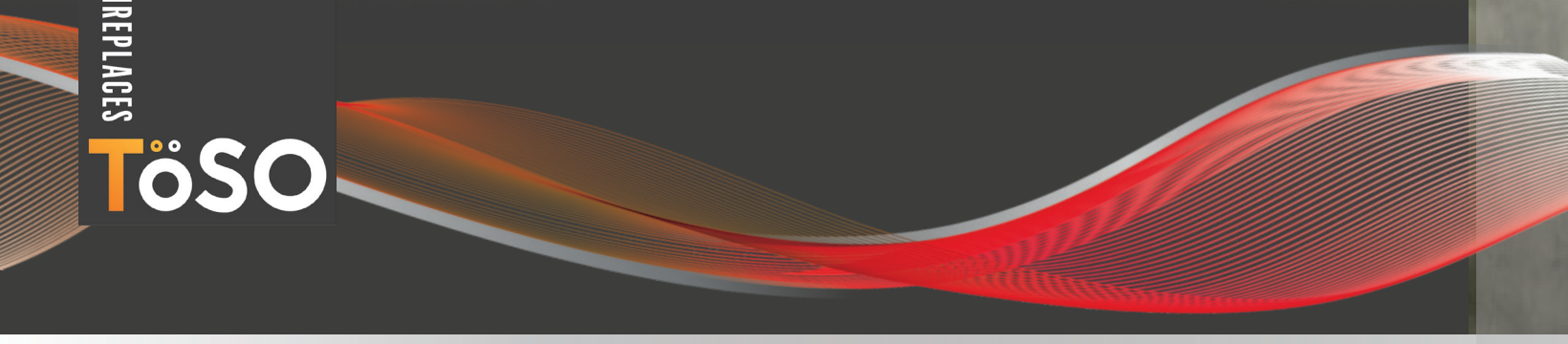
PANORAMA

PANORAMA

ELECTRIC FIREPLACE

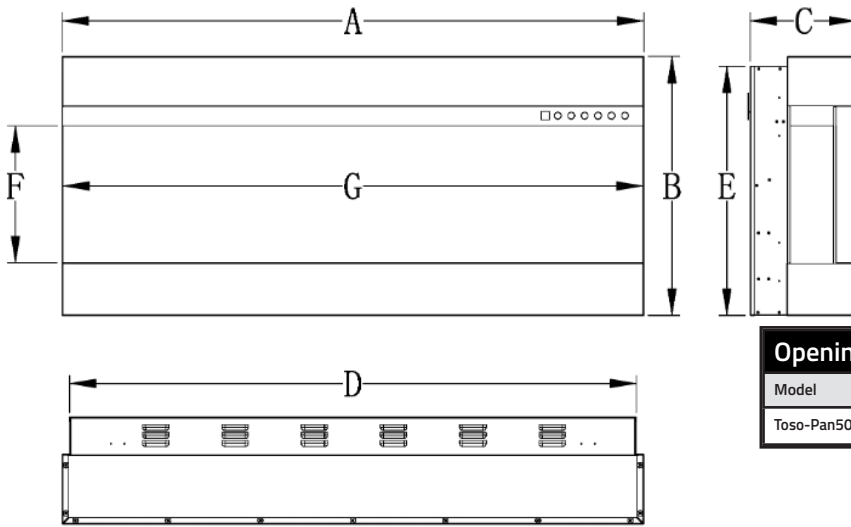


FIREPLACES
TòSO



Features

- Three-sided panorama fireplace with LED lighting
- Semi built-in or surface installation
- 6 colors of flames with 5 intensity levels
- 10 colors of amber bed
- 3 flame speeds
- 750W/1500W 120V heating
- Remote control and touch control buttons
- Driftwood logs, crystals and speckled stones included



Opening Dimensions for Built-In Installation

Model	Width	Height
Toso-Pan50	49 5/16" (125.2CM)	18 7/8" (47.86CM)

Dimensions

Model	A	B	C	D	E	F	G
Toso-Pan50	50" 127cm	19 1/16" 48.4cm	7 7/8" 20cm	48 7/8" 124.2cm	18 5/16" 46.56cm	10 1/16" 25.61cm	49 13/16" 126.57cm



ELECTRIC FIREPLACES LIMITED WARRANTY

2 YEARS ON PARTS AND LABOUR FROM THE DATE OF PURCHASE TOSO WILL SUPPLY

NEW REPLACEMENT PARTS COVERED BY THE LIMITED WARRANTY.

To find your local dealer please contact:

Montreal
9500, boul. Ray-Lawson
Anjou, QC, H1J 1L1
Tel: 514-493-6400
Fax: 514-493-8722
montreal@powrmatic.ca

Ottawa
1412, Star Top Rd
Gloucester, ON, K1B4V7
Tel: 613-230-7160
Tel: 905-660-003
Fax: 613-230-0685
ottawa@powrmatic.ca

London
1064, Hargrieve Road
London, ON, N6E1P5
Tel: 519-675-1491
Tel: 902-454-8684
Fax: 519-675-4725
london@powrmatic.ca

Quebec
385, Fortin
Quebec, QC, G1M1B2
Tel: 418-683-2708
Tel: 905-660-003
Fax: 418-683-8860
quebec@powrmatic.ca

Toronto *new location*
157 Rivermede Rd
Concord, ON, L4K 3M4
Tel: 905-660-003
Tel: 905-660-8881
Fax: 905-660-8881
toronto@powrmatic.ca

Halifax
100, Wright Ave.
Dartmouth, NS, B3B1L2
Tel: 902-454-8684
Tel: 902-453-5875
Fax: 902-453-5875
halifax@powrmatic.ca

Retailer