

# Tubinox<sup>®</sup>

Superior Strength Stainless Steel Liner



[www.securitychimneys.com](http://www.securitychimneys.com)  
800-361-4909 (US) 800-667-3387 (Canada)

# Tubinox®

## APPLICATIONS

The TUBINOX stainless steel liner is designed for installation in a masonry chimney:

- when the clay liner of an existing chimney is damaged
- to improve the chimney's draft
- as a substitute of the clay liner in a new masonry chimney

It can be used to vent solid, liquid or gas-fueled appliances (coal, wood, oil, etc).

## A TRADITION OF EXCELLENCE

For over 50 years, Security Chimneys has been an innovator in the venting field and a market leader in North America. Instrumental in the company's growth has been an ongoing focus on product improvement and the introduction of new, innovative products. This drive for excellence has given rise to the Tubinox venting system, a line of high-quality products that deliver optimal performance.

## FOR YOUR SAFETY

Time and wear can crack clay liners. Under these conditions, your liner can quickly become a nest for creosote deposits. Should this be the case with your masonry chimney, it would be wise, for safety reasons, to consider the advantages of a TUBINOX stainless steel liner.

The accumulation of creosote inside a chimney can become dangerous. As it is inflammable, creosote is the cause of chimney fires which can spread to become a real danger. The stainless steel liner impedes the adhesion of creosote.

## FOR GREAT PERFORMANCE

Controlled-combustion stoves are designed accordingly to highly efficient heat transfer and combustion technologies. Their rate of performance increases when they are installed with a chimney of suitable diameter. Clay liners are often too large. Consequently, they remain too cold and do not allow gas to be completely consumed, a situation which leads to gas condensation, thus formation of creosote.



# SECURITY CHIMNEYS TUBINOX® STAINLESS STEEL LINER

Features	Benefits
Stainless steel, type 304	<ul style="list-style-type: none"><li>• Better corrosion resistance</li></ul>
Twist-lock System	<ul style="list-style-type: none"><li>• Tubinox can be installed simply and easily, thanks to its unique twist-lock system. Just slip the components together and twist 1/8th of a turn.</li></ul>
Dripless Connection	<ul style="list-style-type: none"><li>• Keeps creosote and condensation inside the liner</li></ul>
Limited lifetime Warranty	<ul style="list-style-type: none"><li>• Peace of mind</li></ul>

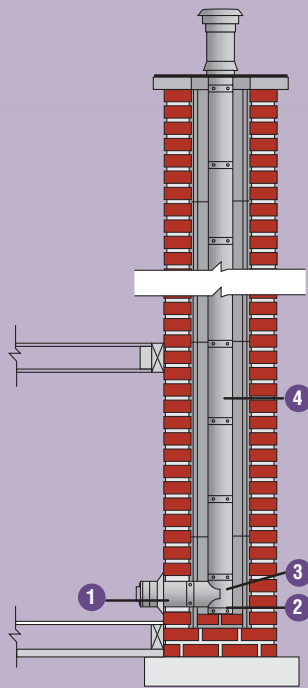
# Installation

## Straight Installation

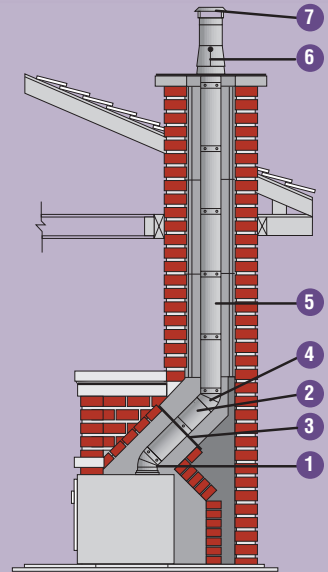
- 1 Masonry Adaptor (LMA)
- 2 Tee Cap (LTCS)
- 3 Split Base Tee (LT)
- 4 Length (L)
- 5 Flashing (LST)
- 6 Deluxe Rain Cap (LCC)

## Offset Installation

- 1 Elbow (LE45/LE90)
- 2 Adjustable Length (L7A)
- 3 Interior Support (LSB)
- 4 Elbow (LE45/LE90)
- 5 Length (LL)
- 6 Support Assembly (LSA)
- 7 Regular Rain Cap (LCS)



Straight Installation



Offset Installation

Tubinox can be installed simply and easily, thanks to its unique twist-lock system. Just slip the components together and twist 1/8th of a turn.

## Materials and Construction

304 stainless steel. Double-lock seam provides superior strength and prevents deformation.

## Diameters

5"-8"

## Listings

UL-1777, ULC-S635M and  
ULC-S640M at 2100°F (1150°C).

# Lengths

## Vent Lengths

Five standard lengths of 6, 12, 24, 36 and 48 inches are available. They can be assembled easily to construct a chimney liner of the required height. Available in 5", 6", 7" and 8" I.D.

Ø	A	Product Code	Ø	A	Product Code
5"	6	5LL6	7"	6	7LL06
5"	12	5LL12	7"	12	7LL12
5"	24	5LL24	7"	24	7LL24
5"	36	5LL36	7"	36	7LL36
5"	48	5LL48	7"	48	7LL48
6"	6	6LL6	8"	6	8LL06
6"	12	6LL12	8"	12	8LL12
6"	24	6LL24	8"	24	8LL24
6"	36	6LL36	8"	32	8LL36
6"	48	6LL48	8"	48	8LL48



## Adjustable Vent Lengths

Adjustable length makes it possible to adjust the liner to the required height. Telescoping from 7 to 11 inches (17.7 to 27.9 cm).

Ø	Product Code
5"	5L7A
6"	6L7A
7"	7L7A
8"	8L7A



## Flexible Vent Lengths

5' Long. Used for offsets where it is difficult to install rigid liner elbows. Made of 304 type stainless steel. The flexible length must be attached to male and female adaptors. (Adaptors sold separately).

Ø	Product Code
5"	5LLFLEX
6"	6LLFLEX
7"	7LLFLEX
8"	8LLFLEX



# Lengths

## Increaser Lengths

Required to adapt the liner to larger flue diameters.

Ø	Product Code
5" - 6"	5LLW6
6" - 7"	6LLW7
7" - 8"	7LLW8



## Reducer Lengths

Required to adapt the liner to smaller flue diameters.

Ø	Product Code
6" - 5"	6LLR5
7" - 6"	7LLR6
8" - 7"	8LLR7



# Elbows

## 30° Elbow

Used to offset the liner.

Ø	Product Code
5"	5LE30
6"	6LE30
7"	7LE30
8"	8LE30



## 45° Elbow

Used to offset the liner.

Ø	Product Code
5"	5LE45
6"	6LE45
7"	7LE45
8"	8LE45



## 90° Elbow

Used to offset the liner.

Ø	Product Code
5"	5LE90
6"	6LE90
7"	7LE90
8"	8LE90

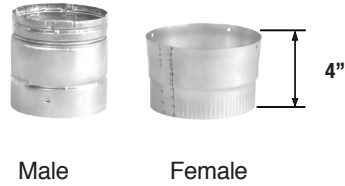


# Accessories

## Adaptor for Flexible Pipe

Used to connect flexible lengths to rigid parts. (Sold separately).

Ø	Male Product Code	Female Product Code
5"	5LAAM	5LAAF
6"	6LAAM	6LAAF
7"	7LAAM	7LAAF
8"	8LAAM	8LAAF



Male

Female

## Split Base Tee

As the width of a masonry chimney is often restricted to a minimum, our split base tee features a removable snout. The snout is fastened to the other section of the tee from the inside of the flue. The tee cap is not included. (LTCS or LTC)

Ø	Product Code	A
5"	5LT	12"
6"	6LT	12"
7"	7LT	12"
8"	8LT	14"



## Regular or Twist-Lock Tee Cap

Used under the tee allowing the inspection and cleaning of the installation. Available in two versions: a regular cap screwed to the bottom of the tee. Or a twistlock cap featuring a longer flue and a handle to facilitate access.

Ø	Regular Product Code	Twist-Lock Product Code
5"	5LTCS	5LTC
6"	6LTCS	6LTC
7"	7LTCS	7LTC
8"	8LTCS	8LTC



## Masonry Adaptor

Designed for use at the indoor exit of the masonry chimney, it comes complete with decorative collar and connects with the stove pipe.

Ø	Product Code
5"	5LMA
6"	6LMA
7"	7LMA
8"	8LMA

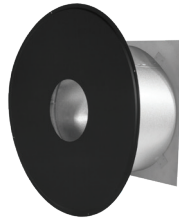


# Accessories

## Insulated Wall Radiation Shield

Designed to cross a combustible wall adjacent to a masonry chimney. The wall radiation shield must be adjusted to the wall of the masonry. This shield can be adjusted from 6" to 12".

Ø	Product Code
6"	6LRSMI
7"	7LRSMI
8"	8LRSMI



## Flashing

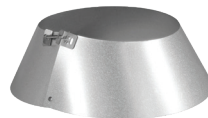
Its ingenious design allows for thermal expansion. Available in Stainless Steel (SS)

Ø	Product Code
5"	5LST
5" STAINLESS STEEL	5LSTSS
6"	6LST
6" STAINLESS STEEL	6LSTSS
7"	7LST
7" STAINLESS STEEL	7LSTSS
8"	8LST
8" STAINLESS STEEL	8LSTSS



## Collar for Flashing

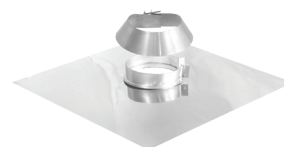
Ø	Product Code
6"	6FCLST
7"	7FCLST
8"	8FCLST



## Support Assembly

Used to support the liner from the chimney allowing space for thermal expansion. Made of stainless steel (type 304); it includes a support collar locking around the flue, and a storm collar to ensure a watertight seal.

Ø	Product Code
5"	5LSA
6"	6LSA
7"	7LSA
8"	8LSA



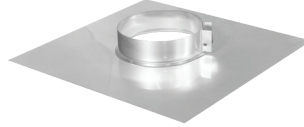


# Accessories

## Interior Support

Supports the liner from the inside installations with deviation and includes a support collar locking around the flue.

Ø	Product Code
5"	5LSB
6"	6LSB
7"	7LSB
8"	8LSB



## Rain Cap

An essential finishing part, its efficient design minimizes the introduction of snow or rain without reducing the required draft.

Ø	Regular Product Code	Deluxe Product Code
5"	5LCS	5LCC
6"	6LCS	6LCC
7"	7LCS	7LCC
8"	8LCS	8LCC



# Accessories

## TherMix

Use to fill space between a liner and inside masonry chimney. Ready-mix formula cures into lightweight semi-hard mass that insulates the liner and dissipates the intense heat created in a chimney fire.

\*Use Table 1 to estimate the number of TherMix bags or boxes needed to do the job.

- Find the flue opening that comes closest to the one being lined, the left hand column.
- Find the size of the liner to be installed across the top line.
- Where the values intersect, read the cubic foot volume of TherMix per foot of chimney height.
- Multiply this volume by the height (in feet) of the chimney.
- Divide the cubic feet calculated in the previous step by 3.25. This answer will determine the number of bags/boxes of TherMix needed.



Ø	Product Code
BAG	TMXBAG
BOX	TMXBOX

### Example:

A 28' chimney with a flue opening of 8.5" x 8.5" is to be lined with a 6" liner. As shown in Table 1, .30ft<sup>3</sup> of TherMix is needed per foot of chimney height. Multiply .30 by 28 (the height of the chimney), to get 8.4ft<sup>3</sup>. Now divide 8.4 by 3.25 (the approximate volume yield per bag of TherMix), to obtain 2.6 bags/boxes of TherMix to complete the installation.

\*Masonry chimneys are not uniform structures. Have extra bags/boxes available in case you need them. If there is an installation not covered by table 1, refer to the formula below:

$$\text{Packages of TherMix} = \frac{(W \times D \times H) - (CS \times H)}{1728 \text{ cu. in.}} \div 3.25$$

W = Width of masonry flue opening (in inches)  
 D = Depth of masonry flue opening (in inches)  
 H = Height of masonry flue (in inches)  
 CS = Cross Section areas of chimney liner (table 2)

TABLE 1: THERMIX VOLUME PER ONE FOOT OF CHIMNEY HEIGHT

Flue Opening	Diameter of Liner					
	5"	6"	7"	8"	10"	12"
7.5" x 7.5"	.25	.20	--	--	--	--
7.5" x 11.5"	.46	.40	(Ovalized) .38	(Ovalized) .32	--	--
8.5" x 8.5"	.36	.30	.23	--	--	--
8.5" x 11.5"	.54	.48	.41	(Ovalized) .36	(Ovalized) .33	--
9.5" x 9.5"	.49	.43	.36	.27	--	--
11.5" x 11.5"	.78	.72	.65	.60	.37	--
11.5" x 16.5"	1.18	1.12	1.05	.96	.77	--
12.5" x 12.5"	.95	.88	.82	.73	.53	--
14.5" x 14.5"	1.30	1.26	1.20	1.10	.92	.65
14.5" x 18.5"	1.70	1.66	1.60	1.50	1.30	1.04

TABLE 2: CROSS SECTION AREA OF LINER

Liner Size	CS Area	Oval Liner Size	Oval Dimensions	CS Area
Round 5"	19.62in <sup>2</sup>			
Round 6"	28.46in <sup>2</sup>	Oval 6"	(4.2" x 7.2")	24.60in <sup>2</sup>
Round 7"	38.46in <sup>2</sup>	Oval 7"	(4.2" x 9.1")	32.20in <sup>2</sup>
Round 8"	50.25in <sup>2</sup>	Oval 8"	(4.2" x 10.3")	37.20in <sup>2</sup>
Round 9"	62.50in <sup>2</sup>			
Round 10"	78.50in <sup>2</sup>	Oval 10"	(4.2" x 13.3")	49.50in <sup>2</sup>
Round 12"	113.22in <sup>2</sup>			

# Accessories

## ProFoil

Use as insulator for stainless steel liners in masonry chimneys. UL Listed insulation. Size is based on vent diameter.

Required to insulate stainless steel liner to meet UL 1777 when proper clearances to chimney and framing are not available. 1" clearance from SS liner to interior wall of the masonry chimney and 1" clearance from the masonry to the house framing are required in order to meet UL 1777. If you do not have either of these clearances then a 1/2" wrap is required. If these two clearances are available then no insulation is needed. AluFoil Tape and ProMesh required.



Ø	FITS Ø	THICKNESS	Product Code
22"x25'	5"-5 1/2"	1/2"	3-6PF22X25
24"x25'	6"	1/2"	7PF24X25
29"x25'	7"	1/2"	8PF29X25
48"x25'	8"-12"	1/2"	9-12PF48X25

## AluFoil Tape

Use to seal seams of ProFoil insulation. 2 mil aluminum foil tape has strength and adhesion.

Ø	Product Code
3" x 150'	ALFTAPE



## ProMesh

Use to protect the ProFoil during installation. 304 stainless steel mesh slides over insulated liner. Shrinks to fit liner when pulled length-wise.

Ø	Product Code	LENGTH
SM 3"-6"Ø	3-6PMESH	25'
LG 7"-9"Ø	7-9PMESH	25'
XLG 10"-12"Ø	10-12PMESH	25'



[www.securitychimneys.com](http://www.securitychimneys.com)

**Security Chimneys**

2125 Monterey, Laval, Quebec  
Canada, H7L 3T6

450-973-9999  
800-361-4909 (US)  
800-667-3387 (Canada)  
450-973-2222 (Fax)

Need product information or technical support? Our customer service specialists are ready to answer your questions:

800-667-3387 or contact  
[info@securitychimneys.com](mailto:info@securitychimneys.com)



[www.securitychimneys.com](http://www.securitychimneys.com) 800-361-4909 (US) 800-667-3387 (Canada)

Security Chimneys International © 2021

Information published in all Security Chimneys literature is current at time of publication and is subject to change without notice.

ETUBINOX  
09-2021